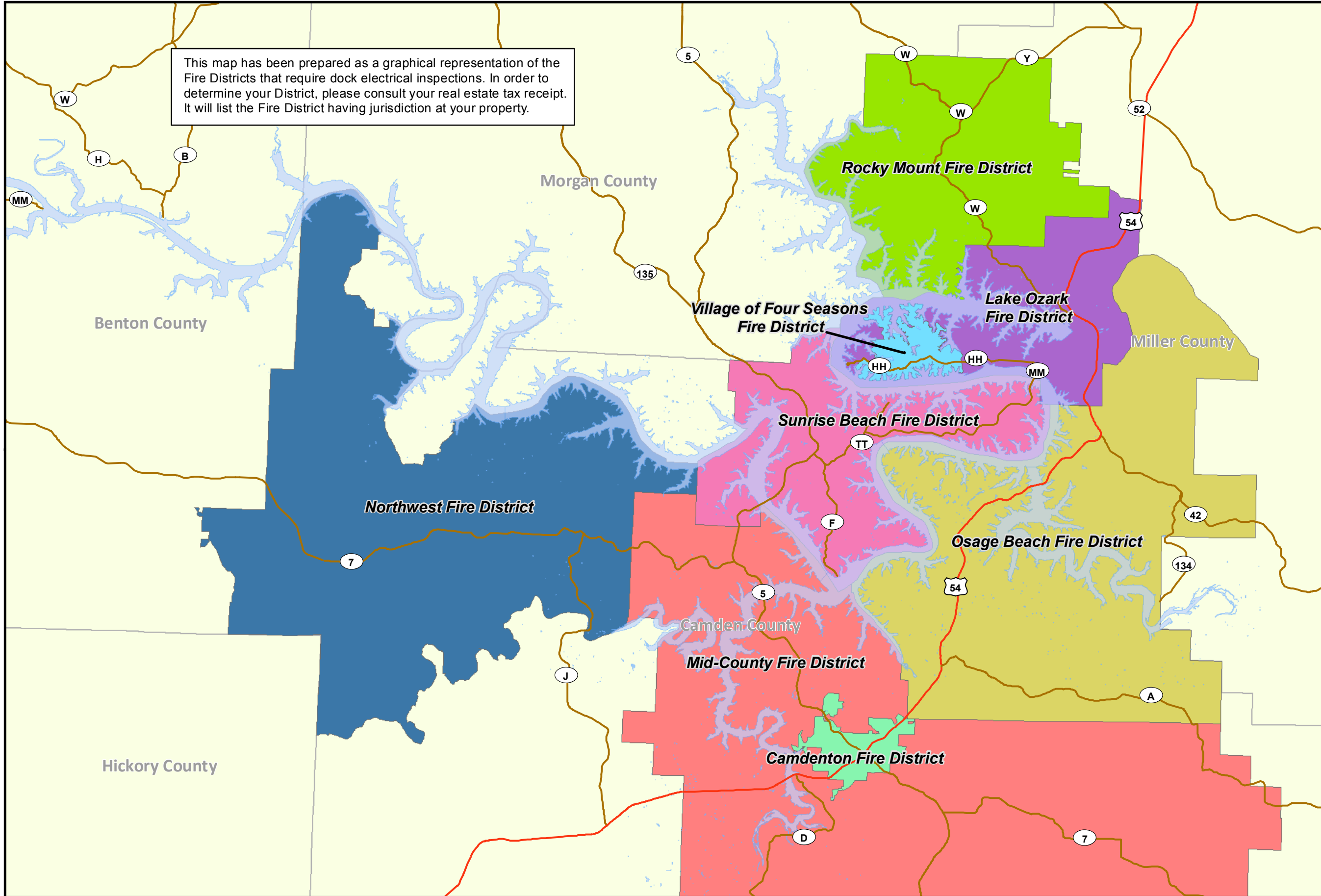


This map has been prepared as a graphical representation of the Fire Districts that require dock electrical inspections. In order to determine your District, please consult your real estate tax receipt. It will list the Fire District having jurisdiction at your property.



Shoreline Facilities GIS



Real Estate Department
Shoreline Management Office



1 inch = 16,000 feet

The information provided on this drawing is considered "as is" without warranty or any representation of accuracy, timeliness, or completeness. This drawing does not represent a survey and has been compiled from official records, including plats, surveys, recorded deeds, and contracts, and only contains information required for planning purposes. There are no warranties, expressed or implied, as to the appropriate use of this drawing or the fitness for a particular purpose. Ameren, and their subcontractor, assumes no responsibility for use or interpretation of the data. No liability is assumed for the accuracy of the data delineated on any map, either expressed or implied. This map and the data contained within is a work in progress, constantly being updated. All critical information should be independently verified.